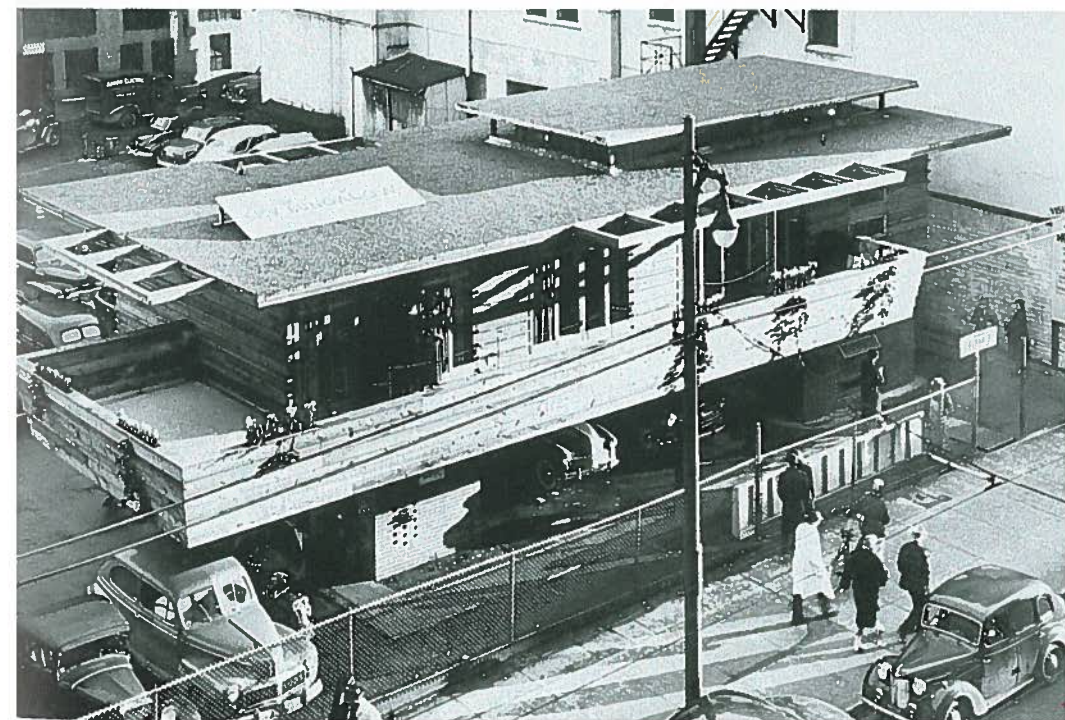
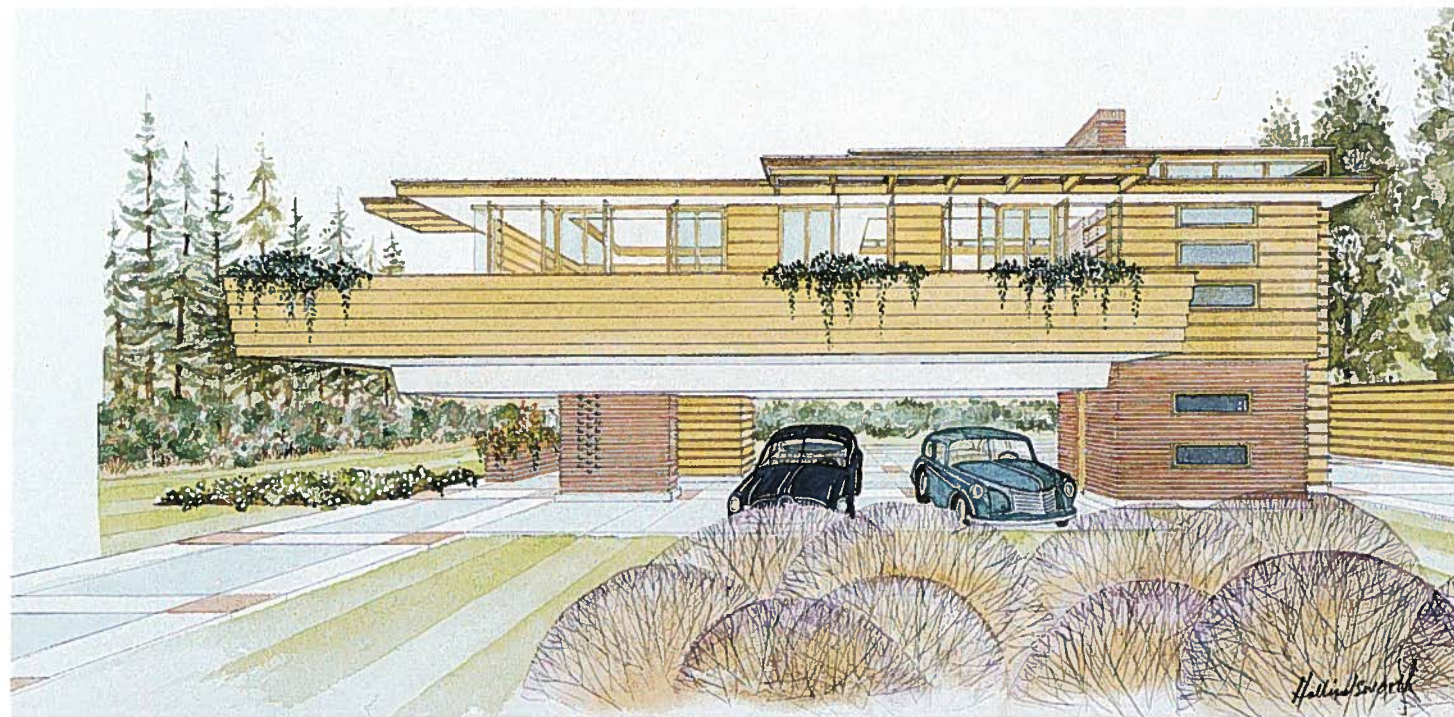
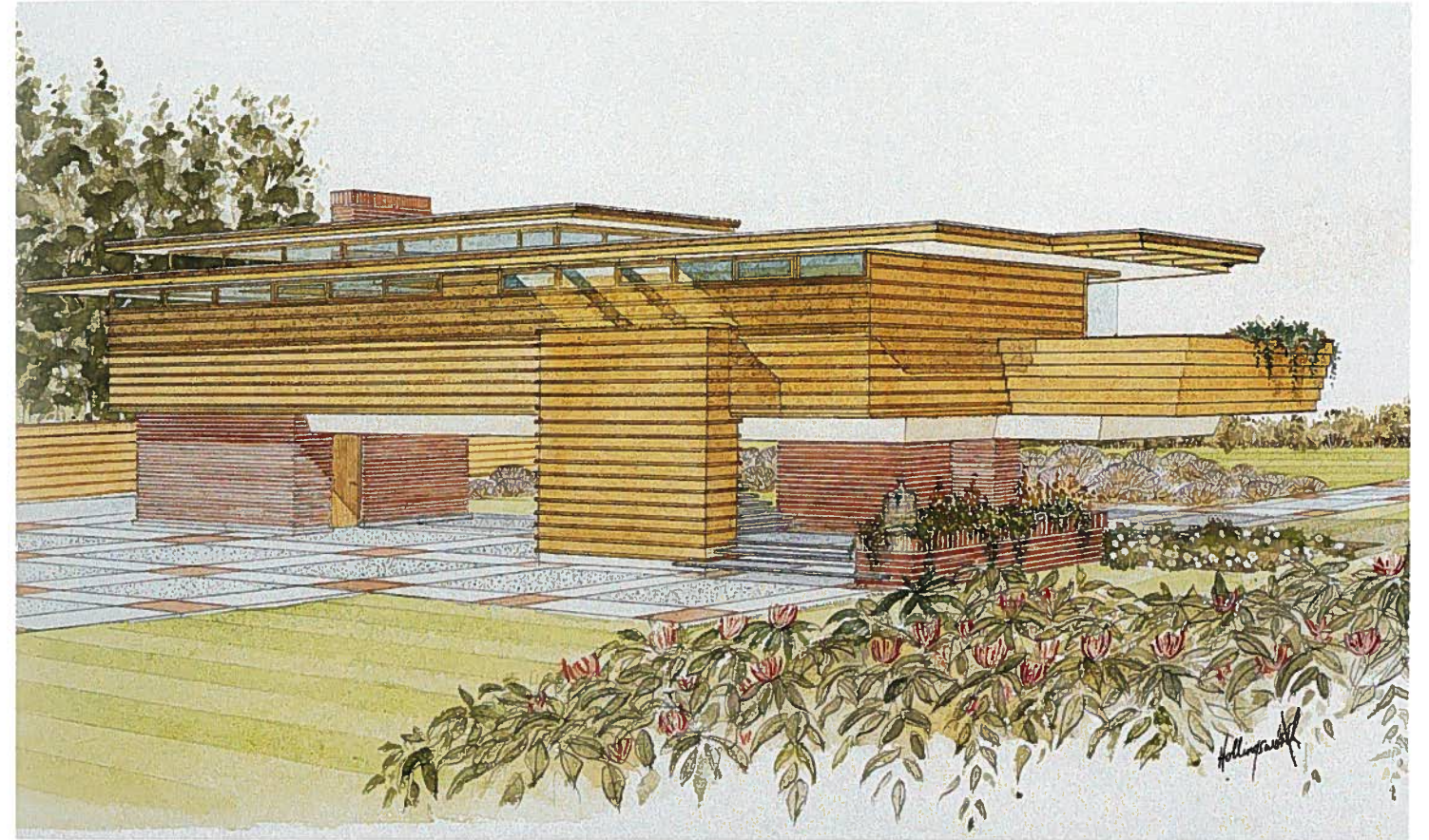
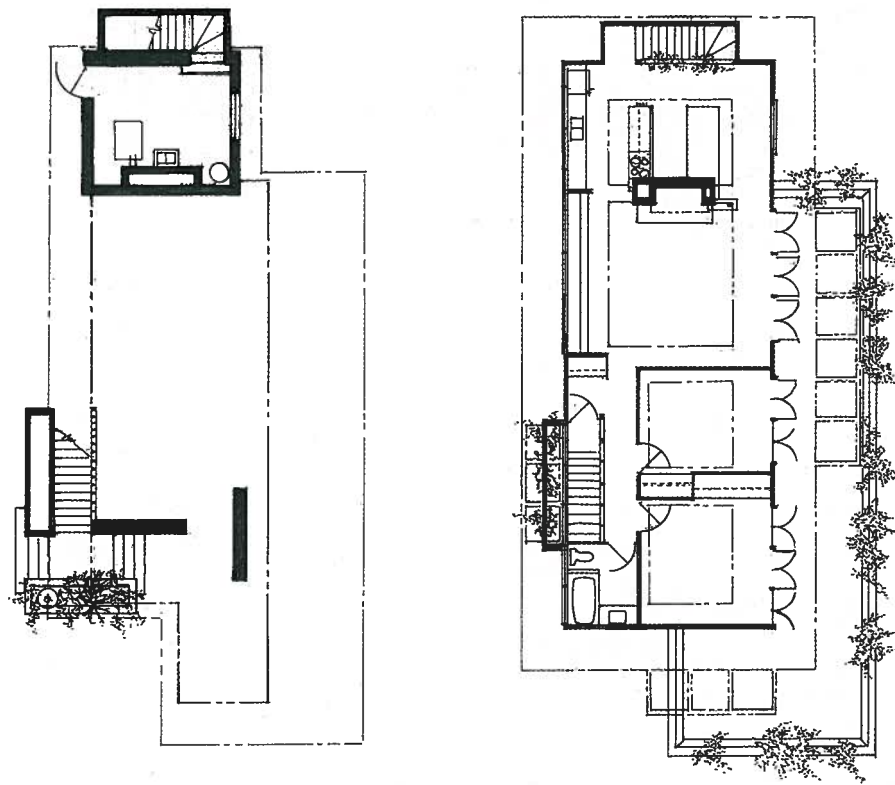
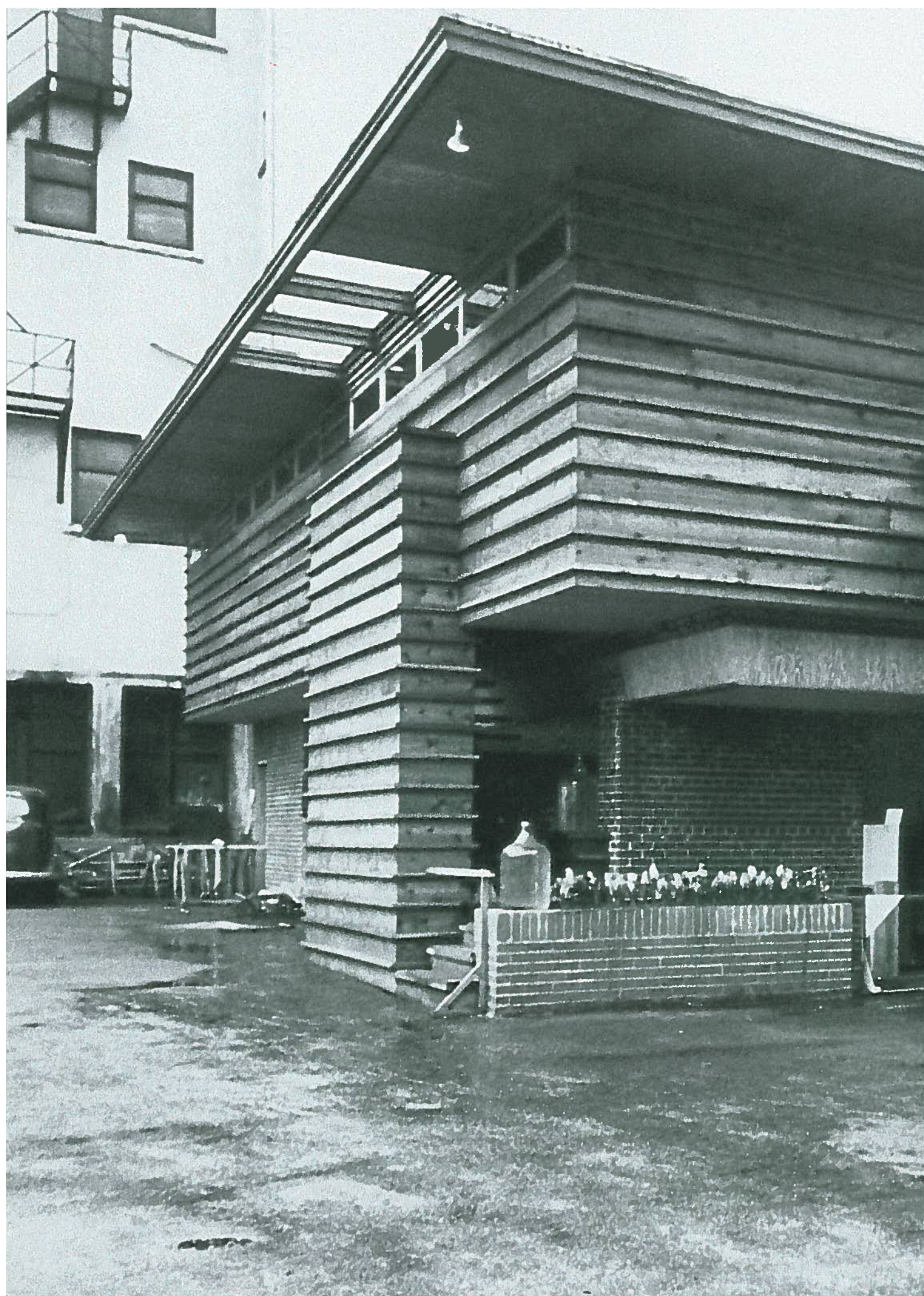


Sky Bungalow 1949

EARLY WORK

Designed as a show house to promote Capilano Highlands, it was constructed on the parking lot of the Hudson's Bay Department Store. It was allowed to take up three parking spaces only, so the solution was to elevate the house, one story off the ground on two brick structural columns and a brick utility room to support three cantilevered steel beams. It featured an open plan, frame construction with clerestory windows.





The outside and inside were cedar board and batten. The house had many built-in features including stainless steel counter tops. It not only promoted modern house design, but also furniture and appliances. It was considered startlingly contemporary and introduced many people to what would soon become common features of West Coast houses. The house was sold and moved to a location in the Capilano Highlands

